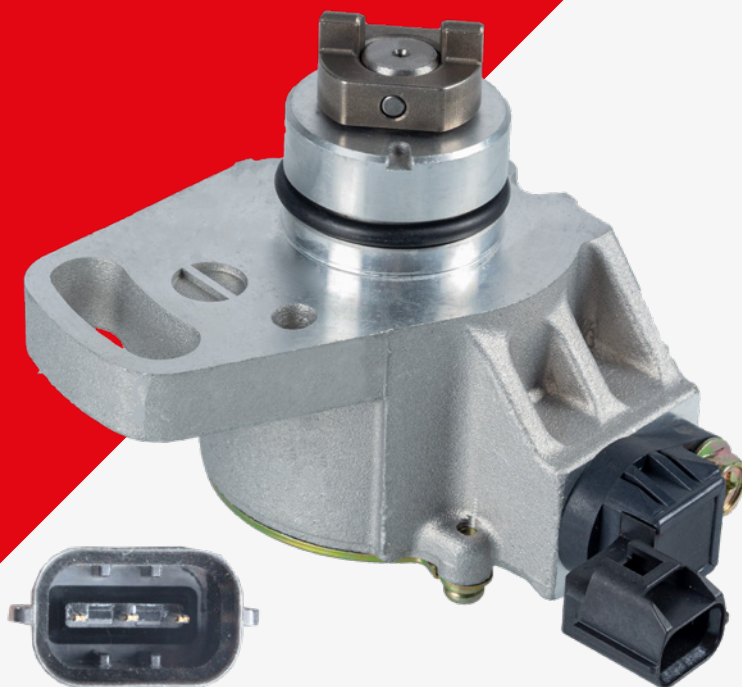




to fit:
Suzuki Grand Vitara 1998>2005



EN

Suzuki Grand Vitara - Camshaft Position Sensor

Problem

Engine fails to start.

Cause

No signal from the camshaft sensor, which is driven by the camshaft.

Note: When first diagnosing this sensor for possible signal failure ensure the exhaust camshaft is turning, whilst cranking, because of the common chain drive failures.

Solution

If replacing this Hall Effect camshaft sensor, the ignition timing needs to be checked and adjusted as necessary.

To set the ignition timing for this vehicle, the following procedure must be carried out.

- The engine should be at operating temperature and all loads switched off, idle speed 750+/-50 rpm.
- With the engine not running, set the vehicle in to its fixed spark mode, using suitable diagnostic equipment.
- Adjust the camshaft sensor by turning it to obtain the correct adjustment, checking with a timing light. 5°+/- 1°BTDC. Then tighten the fixing bolts.
- After checking the adjustment, end the fixed spark mode, stop and restart the engine.
- Recheck the ignition timing using a timing light, while the engine is idling, this should be 14°+/-2°BTDC.
- If the ignition timing is out of adjustment, recheck using this procedure.

For more technical information please visit: partsfinder.bilsteingroup.com