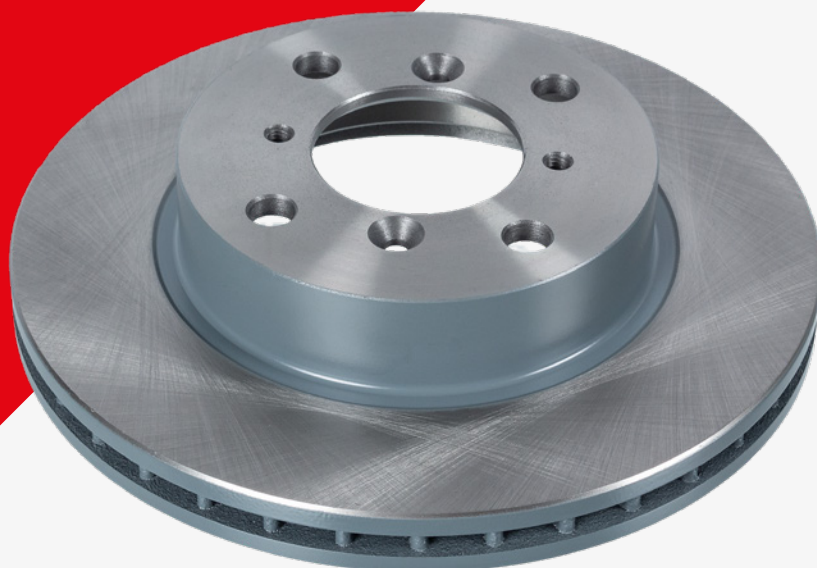


To Fit: Mazda CX-7 2006 > 2014, CX-9 2007 > 2016,
MX-5 2005 > 2014



EN

Brake Disc

For the vehicle production period after October 2012, Mazda modified the design of the wheel hubs and brake discs - removing the retaining screw fixing points (on both the hubs and discs) as an effect.

As a result, and when replacing the front brake discs on the models listed above, it can be found that the brake disc is not secured to the wheel hub with retaining screws upon removal of the road wheel.

However, replacement febi brake discs 108612 and 108658 are manufactured with two retaining screw fixing holes - allowing febi brake discs to be compatible with vehicles made before and after the production date change.

108612 and 108658 can either be used with or without the retaining screws because the road wheel secures the brake disc to the hub once the wheel nuts are tightened to the correct torque.

Using a suitable torque wrench, the wheel nut should be tightened to:

CX-7: 103 ± 15 Nm

CX-9: 128 ± 15 Nm

MX-5: 103 ± 10 Nm

For more technical information please visit: partsfinder.bilsteingroup.com